

Appendix I: UTK Math Faculty: Areas and Strengths

Areas in the UTK Mathematics Department

Algebra and Combinatorics

Finotti (2006)
 Tzermias (2001)
 Mulay (1982)
 Anderson (1976)
 Dobbs (1975)
 Wagner (1969)

Analysis

Lind (2010)
 Nicoara (2007)
 Frazier (2006)
 Richter (1988)
 Sundberg (1979)
 Stephenson (1976)

Applied and Computational Math

Day (2010)
 Xing (2009)
 Wise (2007)
 Schulze (1999)
 Collins (1993)
 Feng (1993)
 Karakashian (1980)
 Alexiades (1978)

Differential Equations

Phan (2012)
 Denzler (2001)
 Todorova (2001)
 Lenhart (1981)
 Simpson (1978)
 Hinton (1970)

Geometry and Topology

Schwartz (2009)
 Brodskiy (2003)
 Conant (2003)
 Plaut (1992)
 Freire (1991)
 Thistlethwaite (1988)
 Dydak (1984)
 Daverman (1967)

Probability

Maroulas (2010)
 Chen (2000)
 Xiong (1993)
 Rosinski (1985)
 Rajput (1972)

Selected Faculty Research Recognition

National and International Recognition

- Elected Fellows of the AAAS (American Association for the Advancement of Science): Robert Daverman (2009), Lou Gross (2009), Suzanne Lenhart (2010), Ken Stephenson (2011). The AAAS is the largest national scientific organization. In 2009 there were only 6 mathematicians elected fellows of the AAAS, and in 2011 there were 8.

- Elected Fellows of the IMS (Institute of Mathematical Statistics): Jan Rosinski (1997), Xia Chen (2008) The IMS is the premiere international organization in the fields of probability and statistics. In 2008 there were 17 elected IMS fellows worldwide.

- Elected SIAM (Society of Industrial and Applied Mathematics) Fellow: Suzanne Lenhart (2011)

- AMS (American Mathematical Society) Regional Meeting Plenary Lecture: Robert Daverman (1975), David Anderson (1998), Sergey Gavrillets (2007), Stefan Richter (2010) There are at most 32 AMS regional meeting plenary lectures annually.

- Sonia Kovalevsky Lecture: Suzanne Lenhart (2010) Dr. Lenhart is the 8th individual to ever give the Sonia Kovalevsky Lecture, which is presented at the SIAM Annual Meeting.

University Recognition

- Chancellor's Research and Creative Achievement Award: William Wade (1991), Morwen Thistlethwaite (1993), Suzanne Lenhart (1994), Jan Rosinski (1999), Lou Gross (1999), Sergey Gavrillets (2001), Stefan Richter (2011) Currently 4 of these awards are given annually.

- Chancellor's Professional Promise in Research and Creative Achievement: James Conant (2009) Four awards are given annually.

- UT Notable Woman Award: Suzanne Lenhart (2010) This award is given to one faculty member, once every three years.

- Appointed UTK Chancellor's Professor: Suzanne Lenhart (2011) There are currently 12 UTK Chancellor's Professors.

College of Arts and Sciences Recognition

- Senior Research/Creative Achievement Award: Suzanne Lenhart (2006), Ken Stephenson (2008), Xiaobing Feng (2010) There are 1 or 2 of these awards given annually by the College.

- Junior Research/Creative Achievement Award: James Conant (2007), Steve Wise (2010) Two of these awards are given annually.

Selected Highlights of Senior Faculty Strengths by Area

Algebra David Anderson and David Dobbs are the two senior leaders in the department in algebra. David Dobbs is by far the most prolific writer of journal articles, with more than 350 published papers. David Anderson has been honored by giving an AMS Regional Meeting Plenary Lecture in 1999. There was a conference in Korea in 2009 in honor of David's and his brother's work, and there was a special session at the annual AMS meeting in their honor, also in 2009.

Analysis Ken Stephenson, AAAS Fellow, is a world leader in the area of circle-packing and discrete geometry. Longtime collaborators Carl Sundberg and Stefan Richter published a paper in the *Annals of Mathematics*, the most prestigious journal in mathematics, in 2009, one of only a half dozen or so papers ever published in this journal by a UT faculty member.

Differential Equations Don Hinton has had a long career as an authority on the spectral theory of Ordinary Differential Equations, a focus of the UTK Mathematics Department at the time of John H. Barrett. Suzanne Lenhart, AAAS Fellow, is a leader in the application of differential equations to biology, and recently authored a text on that subject. She is a SIAM Fellow and a Chancellor's Professor. Grozdna Todorova has a worldwide reputation for her work in nonlinear hyperbolic Partial Differential Equations.

Geometry/Topology Bob Daverman, AAAS Fellow, has had a long and distinguished career. Morwen Thistlethwaite is well-known for his expertise in knot theory, in particular for his 1993 paper resolving the 100 year old Tait flyping conjecture. Jerzy Dydak has a very extensive and distinguished publication record in topology. Alex Freire has published two papers in *Inventiones Math.*, one of the most prestigious mathematics journals.

Numerical and Applied Mathematics Ohannes Karakashian is an established authority on Discontinuous Galerkin methods in numerical analysis. Xiaobing Feng has a superb publication and grant record, especially in recent years. Tim Schulze is a leader in mathematical materials science, as evidenced by his PI NSF grant, and his NSF FRG grant with faculty members at Brown and Michigan.

Probability Two of our probability and stochastics faculty, Jan Rosinski and Xia Chen, are elected fellows of the IMS, and both have outstanding records of publication in the most prestigious journals in their field. Jie Xiong has an outstanding publication record, a recent text, and a current NSF PI grant.

APPENDIX II – National Research Council Data

THE DEPARTMENT OF MATHEMATICS AT THE UNIVERSITY OF TENNESSEE AND THE 2010 NATIONAL RESEARCH COUNCIL DATA-BASED ASSESSMENT OF RESEARCH-DOCTORAL PROGRAMS IN THE UNITED STATES

1. History. In prior (1982, 1995) rankings of doctoral programs in the United States, the National Research Council (henceforth, NRC) surveyed, for each academic field, a set of department heads and senior scholars, asking them to assign to each department offering a doctorate in their field a score ranging from 5 (distinguished department) to 0 (department not qualified to offer doctoral work). Departments in each field were then ranked by the average of their assigned scores. Respondents assigned scores purely on a reputational basis. In the 1995 rankings the Department of Mathematics at the University of Tennessee was tied with Tulane University and Iowa State University for 73rd place out of 139 doctoral programs, with a score of 2.59.

2. The 2010 NRC Rankings. Dissatisfied with purely reputational assessments of departments, the NRC undertook a major departure from previous surveys, materializing in the 2010 NRC Data-Based Assessment of Research-Doctoral Programs in the United States. As the name suggests, this assessment was data-driven, based on information provided by university administrations, departments and their faculty members involved in doctoral level education, as well as on information gleaned from citation indices, membership lists of honorary academic academies, etc. This produced for each department a list of 20 numerical program values (19 in the humanities and computer science), which were then standardized to put them on the same scale. It remained only to select weights with which to compute weighted averages of these standardized values, and then to rank programs according to the magnitude of these weighted averages.

In two surveys, program faculty provided the NRC with information on what program characteristics they regarded as most important: 1. Faculty were asked directly how important each of the 20 (resp., 19) program characteristics were, ultimately expressed in so-called “S-weights.” 2. A sample of faculty rated a sample of programs in their fields, based on reputation and information collected by NRC about programs. From these ratings, so-called “R- weights” were extracted by a statistical method called regression, in such a way that the ranks produced by taking R-weighted averages of the 20 (resp., 19) program values reproduced the reputational rankings for the most highly rated programs.

The NRC then obtained a *middle 90 percent range of S-ranks* for each program in a given field through calculations carried out 500 times, each with a different randomly selected set of half of the faculty respondents who had provided S-weights. The 500 samples resulted in a set of 500 S-ranks for each department. The top and bottom 25 ranks were then trimmed and the highest (i.e., numerically smallest) and lowest (i.e., numerically largest) of the remaining 450 ranks were then reported. When the repeated sampling was done from the set of faculty who (indirectly) provided R-weights, the same procedure produced a *middle 90 percent range of R-ranks*.

Appendix II

The 20 (resp. 19) variables used to construct the S- and R-rankings fall into three disjoint categories: Research Activity, Student Support and Outcomes, and Diversity of the Educational Environment. Using the same sampling technique employed in the construction of the S-rank ranges, but with variables restricted to each of the three categories, produced three additional rankings, leading to *middle 90 percent research-rank, student-rank, and diversity-rank ranges*.

CAVEAT. As noted in the November 30, 2010 *Princeton Alumni weekly*, “the S-rankings tended to give the most weight to faculty research activities, while the R-ratings gave substantial weight to program size.” In addition, it should be noted that females and minorities are often underrepresented among the faculty and graduate students in highly regarded departments of science and mathematics. This has led to variables such as percent of female faculty, or percent of female graduate students being given **negative** R-weights in some samples, so that, for example, the larger the percentage of female faculty members in a department, the more this detracts from its rating, and hence its rank in such samples. This seems to us to be a highly objectionable feature of the R-rankings, so we prefer to give more weight to the S-ranking and the Research ranking.

The next four pages show the 2010 NRC data for all 127 ranked Mathematics Departments. The first column shows the 1995 overall ranking. The next column shows the S5 ranking, which means that only 5% of the rankings put that department higher than the number in that column (e.g., on line 50, only 5% of the rankings put UT higher than 36th). The third column shows the S95 ranking, which means that 95% of the rankings put that department higher than the number in that column (e.g., on line 50, 95% of the rankings put UT higher than 62th). The next column is the average of the previous two columns (e.g., on line 50, the average of 36 and 62 is 49). This S avg column was used to sort the list, from lowest to highest. The next 3 columns are similar, but for the R-ranking: R5, R95, and R avg. The next 3 columns are similar, for the Research ranking. The following 3 columns are similar, for the Student Outcomes ranking. The last 3 columns cover the Diversity ranking.

The next 5 pages contain Tables 1-5. They are based on the NRC data recorded on the following page, the last page of this appendix. Looking at the upper left table on this last page, we see, for example, the S-avg of 49 for mathematics, as described in the previous paragraph. We have done similar averages for all of the other departments in Arts and Sciences and listed them in increasing order in the column marked “Midpoint.” The column marked “Total” shows the total number of programs ranked in each discipline. For example, that number for Math is 127. The other tables on the last page show similar NRC data for the R-ranking, Research ranking, Student ranking, and Diversity ranking.

Table 1 was obtained from the S-ranking data on the last page and the S5 and S95 data. For example, by dividing Math’s S avg of 49 by 127, the number of ranked programs, we get the normalized midpoint 38.6. Similarly Math’s normalized 5% value is $36/127 = 28.3$, and Math’s normalized 95% value is $62/127 = 48.8$. The bar on Table 1 for Math goes from 28.3 to 48.8, centered at 38.6. We have done similarly for the other Arts and Science departments in Table 1, listed in increasing order of midpoint. Table 2 is similar, but for the R-ranking; Table 3 is the Research ranking; Table 4 is the Student ranking, and Table 5 is the Diversity ranking.

Appendix II

NRC Data

University		1995	S5	S95	S avg	R5	R95	R avg	Re5	Re95	Re av	St 5	St 95	St av	D5	D95	D avg
1 PRINCETON UNIVERSITY	Private	1	1	3	2	1	4	2.5	1	3	2	3	25	14	39	78	58.5
2 HARVARD UNIVERSITY	Private	4	1	4	2.5	2	5	3.5	3	9	6	1	14	7.5	26	67	46.5
3 NEW YORK UNIVERSITY	Private	8	1	4	2.5	2	6	4	1	2	1.5	15	89	52	50	93	71.5
4 UNIVERSITY OF CALIFORNIA-BERI	Public	2	3	8	5.5	1	3	2	3	10	6.5	35	89	62	110	120	115
5 STANFORD UNIVERSITY	Private	6	3	9	6	4	9	6.5	3	12	7.5	5	36	20.5	36	79	57.5
6 MASSACHUSETTS INSTITUTE OF T	Private	3	4	11	7.5	5	11	8	4	19	11.5	13	57	35	39	78	58.5
7 YALE UNIVERSITY	Private	7	5	13	9	4	11	7.5	4	13	8.5	9	61	35	29	75	52
8 PENN STATE UNIVERSITY	Public	36	5	16	10.5	5	16	10.5	5	26	15.5	32	86	59	10	33	21.5
9 COLUMBIA UNIVERSITY IN THE CI	Private	10	5	17	11	9	25	17	4	22	13	32	91	61.5	27	61	44
10 UNIVERSITY OF WISCONSIN-MADI	Public	13	6	16	11	6	15	10.5	6	22	14	28	84	56	71	100	85.5
11 CALIFORNIA INSTITUTE OF TECHN	Private	11	5	20	12.5	9	32	20.5	4	22	13	23	91	57	18	54	36
12 UNIVERSITY OF MICHIGAN-ANN AI	Public	9	7	20	13.5	4	12	8	6	23	14.5	27	83	55	54	88	71
13 BROWN UNIVERSITY	Private	16	9	27	18	10	37	23.5	12	44	28	7	39	23	7	24	15.5
14 UNIVERSITY OF NOTRE DAME	Private	43	10	27	18.5	19	49	34	15	40	27.5	2	32	17	56	88	72
15 UNIVERSITY OF CALIFORNIA-DAVI	Public	80	9	33	21	16	47	31.5	5	24	14.5	24	89	56.5	99	114	106.5
16 VANDERBILT UNIVERSITY	Private	84	11	31	21	17	48	32.5	21	55	38	1	24	12.5	42	83	62.5
17 INDIANA UNIVERSITY AT BLOOMIN	Public	33	12	32	22	14	39	26.5	16	45	30.5	22	84	53	42	80	61
18 UNIVERSITY OF CALIFORNIA-LOS	Public	12	13	31	22	8	28	18	22	49	35.5	56	100	78	104	117	110.5
19 UNIVERSITY OF TEXAS AT AUSTIN	Public	23	12	32	22	9	30	19.5	9	29	19	40	94	67	120	124	122
20 UNIVERSITY OF CALIFORNIA-IRVIN	Public	60	11	34	22.5	20	52	36	4	16	10	105	120	113	60	90	75
21 BOSTON UNIVERSITY	Private	47	13	34	23.5	24	53	38.5	15	43	29	14	66	40	14	38	26
22 UNIVERSITY OF CALIFORNIA-SAN	Public	17	13	34	23.5	10	28	19	13	36	24.5	20	77	48.5	119	123	121
23 DUKE UNIVERSITY	Private	34	13	38	25.5	14	47	30.5	19	57	38	6	45	25.5	108	118	113
24 UNIVERSITY OF DELAWARE	Public	76	11	40	25.5	20	54	37	7	33	20	52	102	77	16	44	30
25 RUTGERS THE STATE UNIVERSIT	Public	19	14	41	27.5	12	36	24	10	30	20	36	96	66	55	89	72
26 CORNELL UNIVERSITY	Private	15	15	42	28.5	12	37	24.5	21	55	38	7	43	25	87	109	98
27 UNIVERSITY OF MASSACHUSETTS	Public	55	15	47	31	25	56	40.5	8	32	20	32	96	64	85	106	95.5
28 UNIVERSITY OF ILLINOIS AT URBA	Public	21	17	47	32	12	36	24	12	36	24	105	121	113	53	88	70.5
29 CARNEGIE MELLON UNIVERSITY	Private	38	19	48	33.5	27	54	40.5	26	59	42.5	5	41	23	61	95	78
30 TEXAS A & M UNIVERSITY	Public	59	19	55	37	12	41	26.5	12	45	28.5	79	111	95	25	65	45
31 UNIVERSITY OF ARIZONA	Public	50	21	53	37	20	48	34	16	47	31.5	36	97	66.5	76	100	88
32 UNIVERSITY OF MARYLAND COLLI	Public	18	25	50	37.5	13	38	25.5	13	30	21.5	101	120	111	105	118	111.5
33 ARIZONA STATE UNIVERSITY	Public	81	22	54	38	40	70	55	24	59	41.5	35	89	62	24	51	37.5

Appendix II

NRC Data

University		1995	S5	S95	S avg	R5	R95	R avg	Re5	Re95	Re av	St 5	St 95	St av	D5	D95	D avg
34 MICHIGAN STATE UNIVERSITY	Public	45	24	52	38	11	43	27	20	51	35.5	87	117	102	8	28	18
35 RENSSELAER POLYTECHNIC INST	Private	48	20	57	38.5	26	67	46.5	21	57	39	26	103	64.5	14	39	26.5
36 BRANDEIS UNIVERSITY	Private	31	21	57	39	16	42	29	16	54	35	19	75	47	29	72	50.5
37 UNIVERSITY OF PENNSYLVANIA	Private	22	25	54	39.5	17	42	29.5	33	65	49	11	56	33.5	70	100	85
38 UNIVERSITY OF VIRGINIA	Public	42	24	56	40	50	74	62	39	74	56.5	2	33	17.5	64	91	77.5
39 UNIVERSITY OF CALIFORNIA-SAN	Public	46	24	57	40.5	25	54	39.5	28	65	46.5	14	60	37	104	116	110
40 UNIVERSITY OF ROCHESTER	Private	53	18	64	41	37	78	57.5	13	59	36	14	106	60	32	70	51
41 UNIVERSITY OF CHICAGO	Private	5	27	57	42	12	39	25.5	41	71	56	25	79	52	93	113	103
42 PURDUE UNIVERSITY MAIN CAMP	Public	25	26	59	42.5	12	42	27	22	55	38.5	105	122	114	8	25	16.5
43 UNIVERSITY OF KENTUCKY	Public	67	28	57	42.5	37	69	53	37	67	52	3	30	16.5	99	116	107.5
44 GEORGIA INSTITUTE OF TECHNOI	Public	41	27	60	43.5	24	52	38	18	52	35	62	105	83.5	51	91	71
45 STATE UNIVERSITY OF NEW YORK	Public	20	24	63	43.5	13	42	27.5	19	59	39	52	102	77	41	86	63.5
46 UNIVERSITY OF MINNESOTA-TWIN	Public	14	30	58	44	19	46	32.5	25	54	39.5	56	104	80	18	55	36.5
47 UNIVERSITY OF WASHINGTON	Public	26	29	59	44	26	50	38	26	60	43	38	90	64	100	115	107.5
48 UNIVERSITY OF OREGON	Public	44	30	61	45.5	36	68	52	28	61	44.5	38	101	69.5	123	125	124
49 UNIVERSITY OF PITTSBURGH PITI	Public	57	34	63	48.5	28	55	41.5	35	64	49.5	25	94	59.5	34	71	52.5
50 UNIVERSITY OF TENNESSEE	Public	73	36	62	49	39	65	52	43	69	56	25	81	53	72	97	84.5
51 UNIVERSITY OF ILLINOIS AT CHIC/	Public	32	31	68	49.5	16	51	33.5	31	71	51	65	106	85.5	11	32	21.5
52 UNIVERSITY OF MISSOURI - COLU	Public	91	37	62	49.5	48	71	59.5	34	62	48	13	70	41.5	19	51	35
53 UNIVERSITY OF HOUSTON	Public	64	33	68	50.5	61	98	79.5	41	72	56.5	1	32	16.5	2	12	7
54 UNIVERSITY OF IOWA	Public	58	39	65	52	58	87	72.5	64	85	74.5	4	44	24	31	61	46
55 UNIVERSITY OF UTAH	Public	35	38	71	54.5	42	67	54.5	25	62	43.5	31	100	65.5	59	89	74
56 UNIVERSITY OF KANSAS	Public	-	34	76	55	49	80	64.5	30	72	51	27	93	60	16	47	31.5
57 SYRACUSE UNIVERSITY MAIN CAI	Private	69	34	78	56	50	81	65.5	33	79	56	9	61	35	55	89	72
58 NORTHWESTERN UNIVERSITY	Private	27	39	74	56.5	29	57	43	34	70	52	12	66	39	55	89	72
59 NORTH CAROLINA STATE UNIVER	Public	54	41	73	57	50	75	62.5	34	73	53.5	20	77	48.5	95	112	103.5
60 UNIVERSITY OF NEBRASKA - LINC	Public	83	45	72	58.5	66	100	83	63	91	77	14	69	41.5	72	99	85.5
61 UNIVERSITY OF NORTH CAROLIN/	Public	39	41	76	58.5	48	77	62.5	41	77	59	30	97	63.5	24	60	42
62 UNIVERSITY OF FLORIDA	Public	51	50	82	66	35	63	49	32	66	49	46	106	76	25	62	43.5
63 OHIO STATE UNIVERSITY MAIN CA	Public	28	52	82	67	18	46	32	42	73	57.5	90	119	105	32	75	53.5
64 VIRGINIA POLYTECHNIC INSTITUT	Public	62	52	82	67	61	93	77	63	90	76.5	11	60	35.5	31	65	48
65 UNIVERSITY OF SOUTHERN CALIF	Private	40	49	86	67.5	45	74	59.5	32	71	51.5	34	98	66	124	127	125.5
66 EMORY UNIVERSITY	Private	-	53	84	68.5	71	104	87.5	58	83	70.5	6	66	36	19	52	35.5

Appendix II

NRC Data

University		1995	S5	S95	S avg	R5	R95	R avg	Re5	Re95	Re av	St 5	St 95	St av	D5	D95	D avg
67 BAYLOR UNIVERSITY	Private	-	56	82	69	68	116	92	61	78	69.5	1	19	10	119	123	121
68 FLORIDA STATE UNIVERSITY	Public	78	50	88	69	50	82	66	30	72	51	86	117	102	23	57	40
69 JOHNS HOPKINS UNIVERSITY	Private	29	56	83	69.5	39	63	51	53	79	66	39	97	68	66	96	81
70 RICE UNIVERSITY	Private	24	55	84	69.5	32	57	44.5	55	84	69.5	42	92	67	92	111	101.5
71 UNIVERSITY OF MIAMI	Private	99	52	87	69.5	63	98	80.5	33	71	52	64	114	89	65	91	78
72 LOUISIANA STATE UNIVERSITY AN	Public	66	55	87	71	51	79	65	62	95	78.5	26	84	55	25	59	42
73 NORTHEASTERN UNIVERSITY	Private	77	58	87	72.5	44	69	56.5	54	81	67.5	19	80	49.5	124	127	125.5
74 MICHIGAN TECHNOLOGICAL UNIV	Public	-	58	88	73	66	105	85.5	68	98	83	72	120	96	1	8	4.5
75 WASHINGTON UNIVERSITY IN ST.	Private	37	60	90	75	55	78	66.5	62	97	79.5	26	77	51.5	84	106	95
76 BOWLING GREEN STATE UNIVERSE	Public	110	61	90	75.5	87	114	100.5	85	111	98	1	31	16	7	23	15
77 KENT STATE UNIVERSITY MAIN C/	Public	82	62	89	75.5	57	90	73.5	70	100	85	16	63	39.5	46	82	64
78 NEW MEXICO STATE UNIVERSITY	Public	107	61	90	75.5	73	115	94	73	102	87.5	80	118	99	3	10	6.5
79 STATE UNIVERSITY OF NEW YORK	Public	65	64	89	76.5	74	104	89	85	109	97	3	27	15	16	41	28.5
80 WAYNE STATE UNIVERSITY	Public	90	62	91	76.5	79	115	97	71	97	84	9	75	42	1	8	4.5
81 DARTMOUTH COLLEGE	Private	49	65	90	77.5	78	108	93	80	107	93.5	7	51	29	90	108	99
82 HOWARD UNIVERSITY	Private	113	66	94	80	112	127	119.5	99	122	110.5	74	119	96.5	4	10	7
83 UNIVERSITY OF VERMONT	Public	-	59	101	80	59	112	85.5	47	76	61.5	31	97	64	76	105	90.5
84 TEMPLE UNIVERSITY	Public	68	67	95	81	83	114	98.5	77	107	92	3	42	22.5	16	45	30.5
85 UNIVERSITY OF MEMPHIS	Public	-	68	94	81	106	123	114.5	75	104	89.5	47	106	76.5	8	20	14
86 IOWA STATE UNIVERSITY	Public	58	69	96	82.5	70	99	84.5	81	114	97.5	3	43	23	35	70	52.5
87 UNIVERSITY OF GEORGIA	Public	56	71	96	83.5	53	77	65	73	99	86	35	97	66	37	71	54
88 WESTERN MICHIGAN UNIVERSITY	Public	109	72	97	84.5	75	110	92.5	101	117	109	1	51	26	70	93	81.5
89 UNIVERSITY OF CONNECTICUT	Public	97	75	98	86.5	71	98	84.5	73	101	87	27	89	58	71	98	84.5
90 UNIVERSITY OF SOUTH CAROLIN/	Public	71	77	103	90	58	87	72.5	58	84	71	113	125	119	28	67	47.5
91 UNIVERSITY OF ALABAMA	Public	122	82	102	92	84	115	99.5	78	100	89	29	91	60	8	23	15.5
92 UNIVERSITY OF CALIFORNIA-SAN	Public	52	77	107	92	67	101	84	32	69	50.5	92	118	105	89	108	98.5
93 TUFTS UNIVERSITY	Private	-	82	104	93	72	113	92.5	88	109	98.5	47	114	80.5	13	34	23.5
94 UNIVERSITY OF NEW HAMPSHIRE	Public	-	78	108	93	79	120	99.5	64	89	76.5	116	126	121	1	5	3
95 CLEMSON UNIVERSITY	Public	88	84	105	94.5	58	86	72	76	107	91.5	47	98	72.5	60	89	74.5
96 UNIVERSITY OF OKLAHOMA NORM	Public	96	85	105	95	66	94	80	88	115	101.5	71	112	91.5	23	57	40
97 UNIVERSITY OF CALIFORNIA-RIVE	Public	75	83	108	95.5	73	104	88.5	73	109	91	34	97	65.5	89	106	97.5
98 KANSAS STATE UNIVERSITY	Public	87	85	108	96.5	65	96	80.5	102	121	111.5	3	71	37	23	67	45
99 CLAREMONT GRADUATE UNIVERSE	Private	70	88	111	99.5	80	116	98	79	108	93.5	126	127	127	106	117	111.5

Appendix II

NRC Data

University		1995	S5	S95	S avg	R5	R95	R avg	Re5	Re95	Re av	St 5	St 95	St av	D5	D95	D avg
100 STEVENS INSTITUTE OF TECHNOLOGY	Private	118	89	113	101	113	125	119	110	124	117	14	90	52	33	68	50.5
101 INDIANA UNIVERSITY PURDUE UNIVERSITY	Public	-	90	113	101.5	72	110	91	81	108	94.5	38	108	73	113	120	116.5
102 UNIVERSITY OF NORTH TEXAS	Public	101	88	115	101.5	85	115	100	68	98	83	75	123	99	44	80	62
103 UNIVERSITY OF CINCINNATI MAIN CAMPUS	Public	102	92	112	102	71	105	88	91	112	101.5	102	125	114	8	26	17
104 UNIVERSITY OF MISSOURI - ROLLA	Public	125	93	115	104	77	114	95.5	79	107	93	112	123	118	89	110	99.5
105 UNIVERSITY OF RHODE ISLAND	Public	119	91	117	104	112	126	119	108	125	116.5	2	35	18.5	73	100	86.5
106 GEORGE WASHINGTON UNIVERSITY	Private	127	96	116	106	99	120	109.5	99	119	109	39	107	73	14	38	26
107 UNIVERSITY OF WISCONSIN-MILWAUKEE	Public	111	94	119	106.5	76	109	92.5	73	110	91.5	85	113	99	46	85	65.5
108 TEXAS TECH UNIVERSITY	Public	103	98	118	108	88	114	101	102	121	111.5	23	79	51	33	64	48.5
109 STATE UNIVERSITY OF NEW YORK AT BINGHAMTON	Public	79	100	118	109	101	124	112.5	106	120	113	67	114	90.5	117	122	119.5
110 OREGON STATE UNIVERSITY	Public	86	99	120	109.5	81	111	96	78	105	91.5	120	126	123	88	106	97
111 CITY UNIVERSITY OF NEW YORK COLLEGE OF JERSEY	Public	30	100	120	110	57	95	76	71	96	83.5	121	126	124	101	115	108
112 MONTANA STATE UNIVERSITY - BOZEMAN	Public	-	101	120	110.5	106	125	115.5	97	116	106.5	33	101	67	107	118	112.5
113 TULANE UNIVERSITY	Private	72	99	122	110.5	101	123	112	82	113	97.5	97	120	109	37	71	54
114 UNIVERSITY OF SOUTH FLORIDA	Public	108	104	121	112.5	93	116	104.5	97	115	106	78	114	96	22	59	40.5
115 OHIO UNIVERSITY MAIN CAMPUS	Public	120	105	121	113	108	125	116.5	116	124	120	63	110	86.5	84	109	96.5
116 LEHIGH UNIVERSITY	Private	93	105	122	113.5	101	125	113	122	125	123.5	24	79	51.5	80	105	92.5
117 SOUTHERN ILLINOIS UNIVERSITY	Public	105	105	122	113.5	109	122	115.5	115	124	119.5	62	110	86	5	23	14
118 STATE UNIVERSITY OF NEW YORK AT SENECA	Public	63	107	120	113.5	99	119	109	102	114	108	75	114	94.5	10	32	21
119 UNIVERSITY OF ARKANSAS MAIN CAMPUS	Public	-	105	125	115	82	116	99	107	123	115	31	117	74	85	107	96
120 COLORADO STATE UNIVERSITY	Public	92	111	125	118	85	120	102.5	100	121	110.5	86	121	104	40	76	58
121 MISSISSIPPI STATE UNIVERSITY	Public	-	110	126	118	87	126	106.5	82	106	94	120	127	124	1	7	4
122 UNIVERSITY OF COLORADO AT BOULDER	Public	61	112	125	118.5	76	104	90	94	116	105	113	123	118	118	122	120
123 AUBURN UNIVERSITY	Public	89	118	125	121.5	120	126	123	115	124	119.5	42	93	67.5	15	44	29.5
124 NORTHERN ILLINOIS UNIVERSITY	Public	114	118	126	122	115	126	120.5	114	123	118.5	42	102	72	57	87	72
125 UNIVERSITY OF TOLEDO	Public	-	118	126	122	98	120	109	125	127	126	26	104	65	3	15	9
126 UNIVERSITY OF HAWAII AT MANOA	Public	94	123	127	125	87	114	100.5	117	125	121	86	117	102	126	127	126.5
127 UNIVERSITY OF MISSISSIPPI	Public	132	126	127	126.5	126	127	126.5	126	127	126.5	3	63	33	20	46	33

TABLE 1. S-rank ranges for departments in the College of Arts and Sciences, standardized by dividing the total number of doctoral programs in each field,

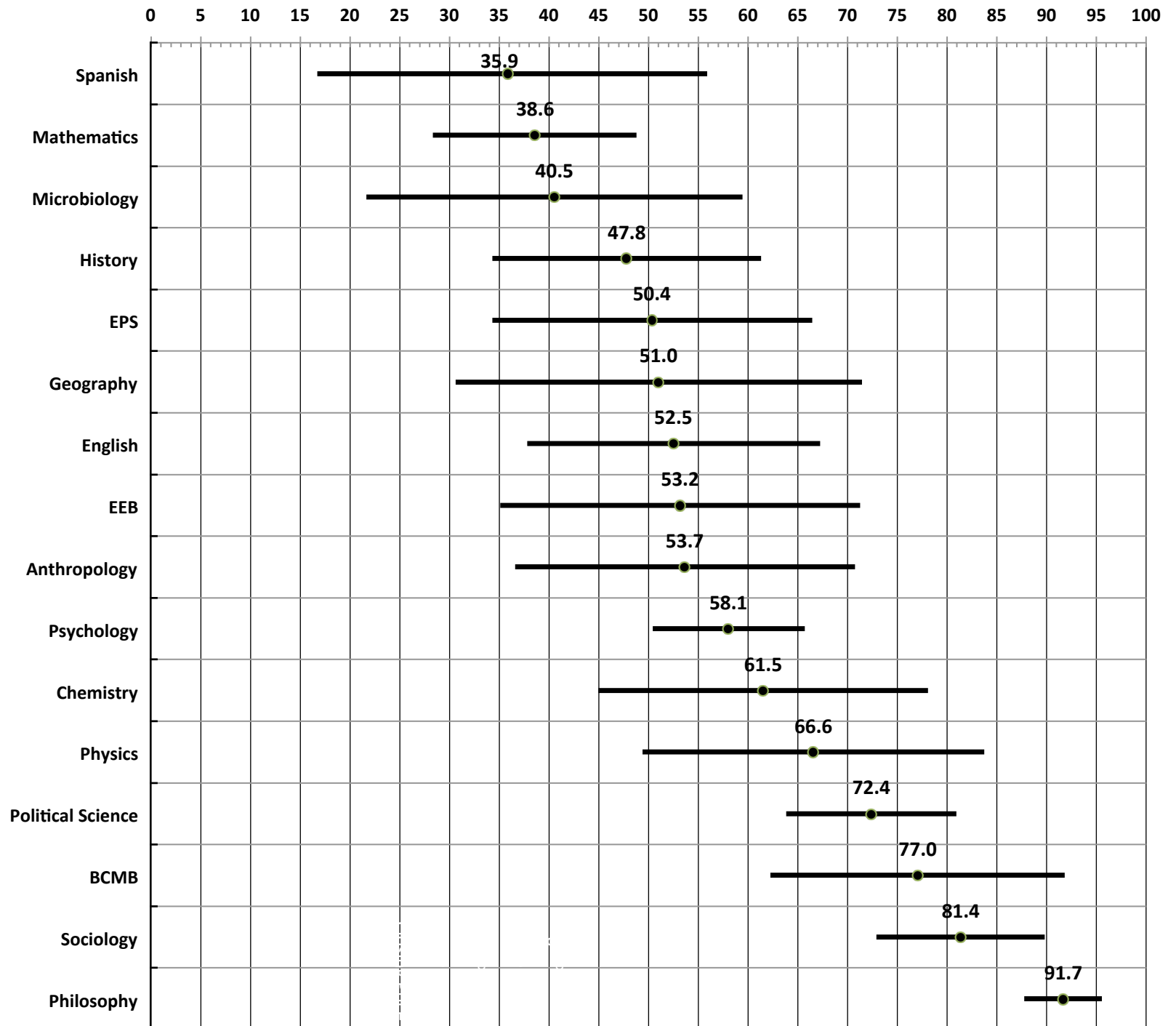


TABLE 2. R-Rank ranges for departments in the College of Arts and Sciences, standardized by dividing by the total number of doctoral programs in each field, ordered by range mid-point.

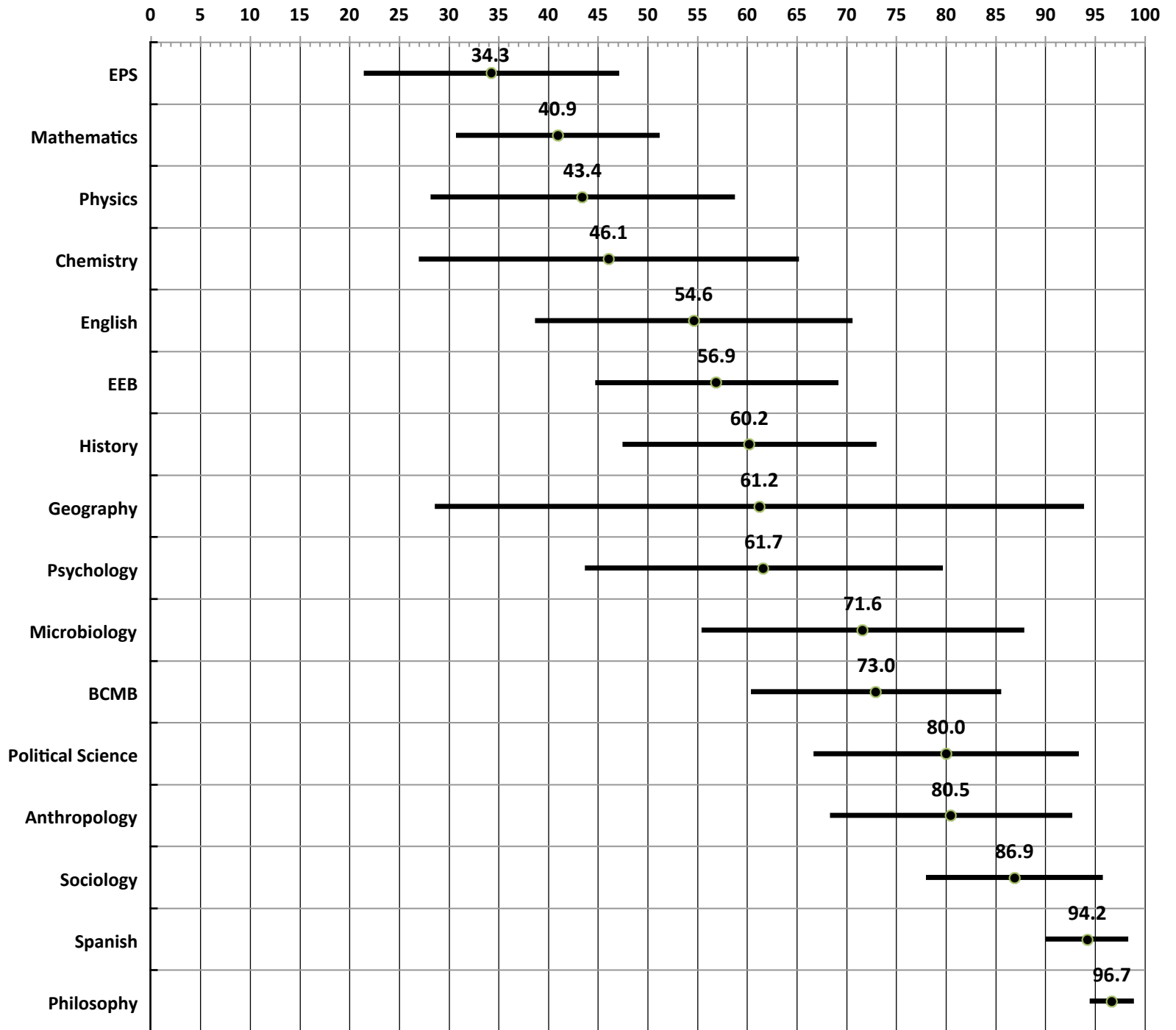


TABLE 3. Research-rank ranges for departments in the College of Arts and Sciences, standardized by dividing by the total number of doctoral programs in each field, ordered by range mid-point.

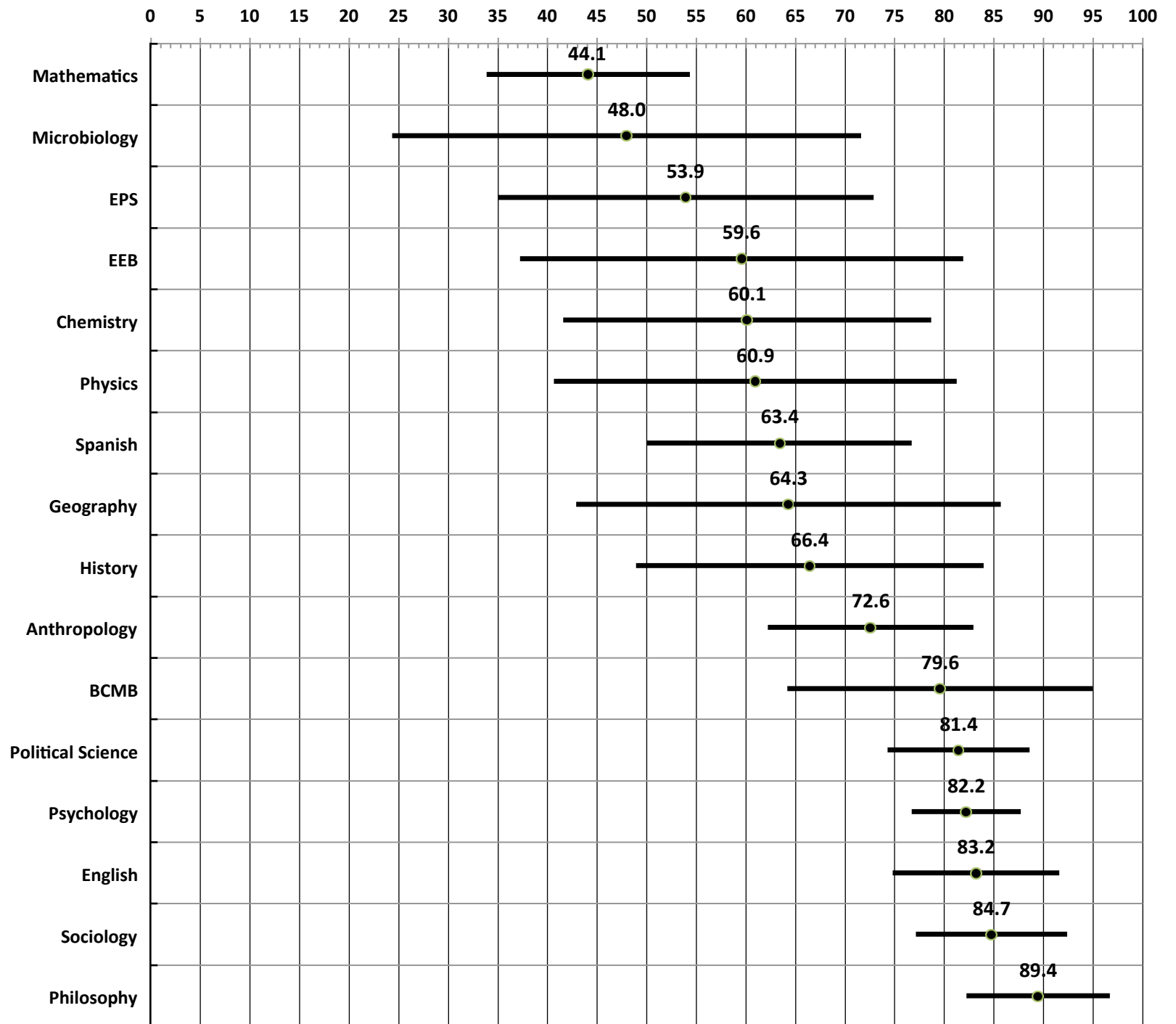


TABLE 4. Student-rank ranges for departments in the College of Arts and Sciences, standardized by dividing the total number of doctoral programs in each field, ordered by range mid-point.

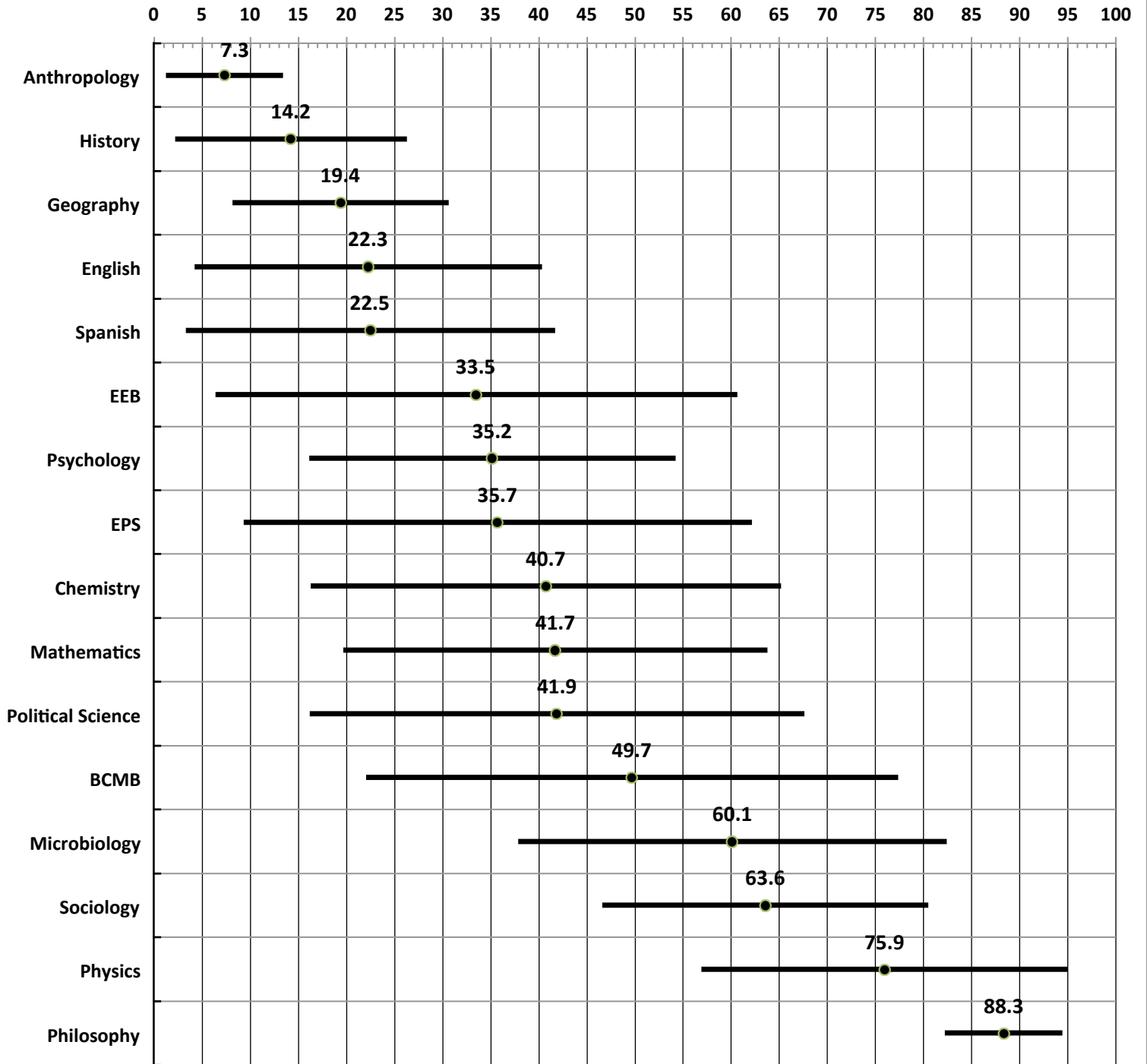
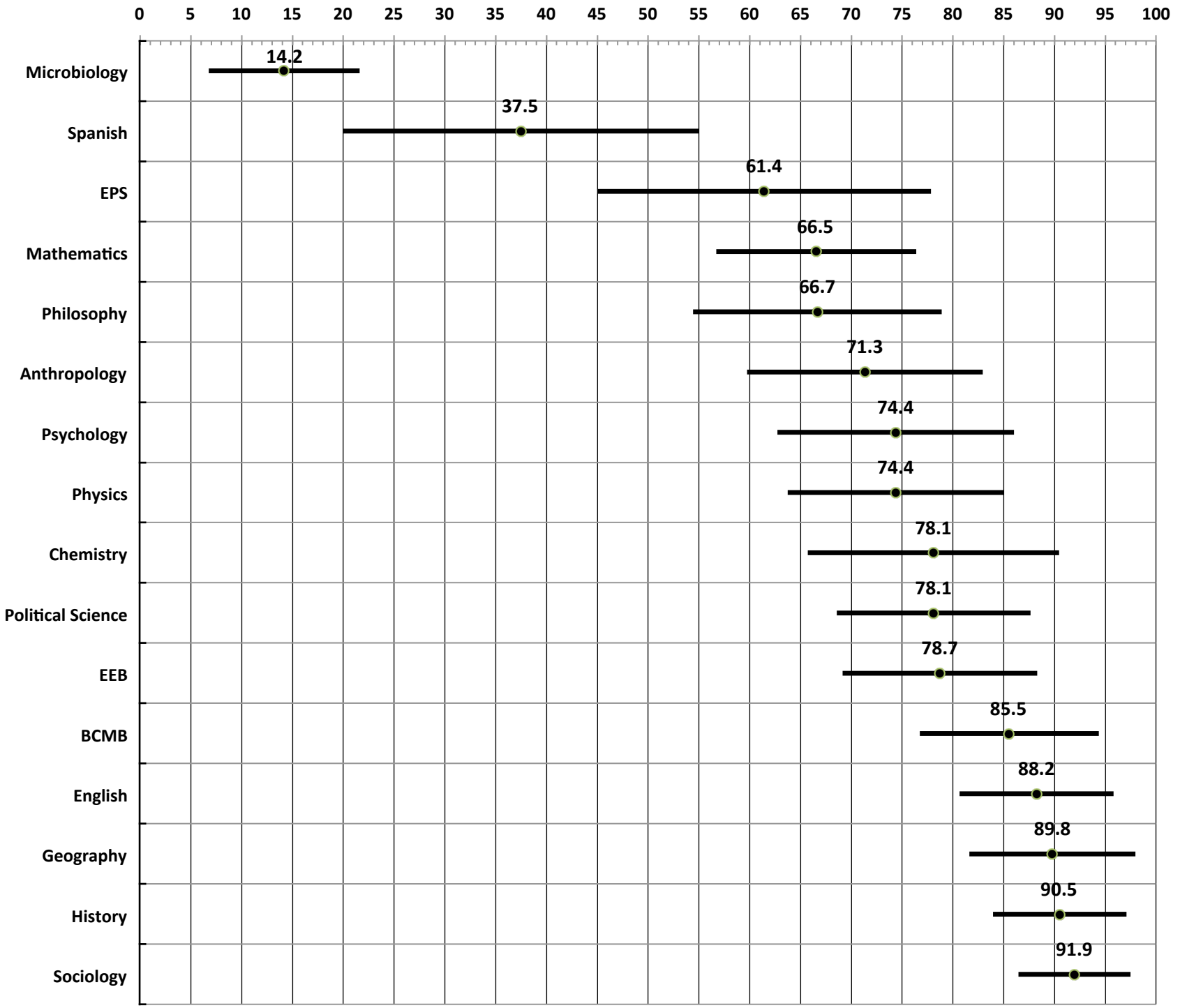


TABLE 5. Diversity-rank ranges for departments in the College of Arts and Sciences, standardized by dividing the total number of doctoral programs in each field, ordered by range mid-point.



Appendix II

S-Rank	Midpoint	Total
Geography	25	49
Microbiology	30	74
Anthropology	44	82
Mathematics	49	127
EEB	50	94
English	62.5	119
History	65.5	137
EPS	70.5	140
Political Science	76	105
Philosophy	82.5	90
Sociology	96	118
Physics	106.5	160
Chemistry	109.5	178
BCMB	122.5	159
Psychology	137	236

R-Rank	Midpoint	Total
Geography	30	49
EPS	48	140
Mathematics	52	127
Microbiology	53	74
EEB	53.5	94
English	65	119
Anthropology	66	82
Physics	69.5	160
History	82.5	137
Political Science	84	105
Philosophy	87	90
Sociology	102.5	118
BCMB	116	159
Chemistry	175.5	178
Psychology	180.5	236

Research	Midpoint	Total
Geography	31.5	49
Microbiology	35.5	74
EEB	56	94
Mathematics	56	127
Anthropology	59.5	82
EPS	75.5	140
Philosophy	80.5	90
Political Science	85.5	105
History	91	137
Physics	97.5	160
English	99	119
Sociology	100	118
Chemistry	107	178
BCMB	126.5	159
Psychology	194	236

Students	Midpoint	Total
Anthropology	6	82
Geography	9.5	49
History	19.5	137
English	26.5	119
EEB	31.5	94
Political Science	44	105
Microbiology	44.5	74
EPS	50	140
Mathematics	53	127
Chemistry	72.5	178
Sociology	75	118
BCMB	79	159
Philosophy	79.5	90
Psychology	83	236
Physics	121.5	160

Diversity	Midpoint	Total
Microbiology	10.5	74
Geography	44	49
Anthropology	58.5	82
Philosophy	60	90
EEB	74	94
Political Science	82	105
Mathematics	84.5	127
EPS	86	140
English	105	119
Sociology	108.5	118
Physics	119	160
History	124	137
BCMB	136	159
Chemistry	139	178
Psychology	175.5	236

Teaching Loads in Mathematics Departments, 2005-6 Updated 2010

Institution by 2010 NRC ranking	S=semesters Q=quarters	Normal teaching load for research- active faculty*	semster equivalent teaching load: quarter load x (2/3)	public?
1 Princeton				
2 Harvard	S	3	3	
3 NYU	S	3	3	
4 UC Berkeley	S	3	3	public
5 Stanford	Q	4	2.7	
6 MIT	S	3	3	
7 Yale	S	3	3	
8 Penn State	S	3-4	3-4	public
9 Columbia	S	3	3	
10 Wisconsin	S	3	3	public
11 Cal Tech	Q	3	2	
12 Michigan	S	3	3	public
13 Brown	S	3	3	
14 Notre Dame	S	3	3	
15 Cal Davis	Q	4	2.7	public
16 Vanderbilt	S	3	3	
17 Indiana	S	3	3	public
18 UCLA	Q	4	2.7	public
19 Texas	S	2-4	2-4	public
20 Cal Irvine	Q	4	2.7	public
21 Boston University	S	3.5	3.5	
22 UC San Diego	Q	4	2.7	public
23 Duke	S	3	3	
24 Delaware	S	4?	4?	public
25 Rutgers	S	3	3	public
26 Cornell	S	3	3	
27 Massachusetts				public
28 Illinois	S	2-4	2-4	public
29 Carnegie Mellon			3	
30 Texas A&M			3	public
31 Arizona				public
32 Maryland	S	3-4	3-4	public
33 Arizona State				public
34 Michigan State	S	3	3	public
35 RPI	S	3	3	
36 Brandeis	S	3	3	

Appendix III

Teaching Loads in Math Departments

37 Penn	S	3	3	
38 Virginia	S	3	3	public
39 UC Santa Barbara	Q	4-5	2.7-3.3	public
40 Rochester				
41 Chicago	Q	3	2	
42 Purdue	S	3.5	3.5	public
43 Kentucky	S	4	4	public
44 Georgia Tech	S	3 (or 2-3)	3 (or 2-3)	public
45 SUNY-StonyBrook	S	3-4	3-4	public
46 Minnesota	S	3	3	public
47 Washington	S	3	3	public
48 Oregon	Q	4.5	3	public
49 Pittsburgh			4	public
50 Tennessee	S	3.75	3.75	public
51 University of Illinois at Chic	S	3	3	public
52 Missouri				public
53 Houston			2-4	public
54 Iowa	S	4	4	public
55 Utah	S	2-4	2-4	public
56 Kansas				public
57 Syracuse				
58 Northwestern	Q	4	2.7	
59 North Carolina State			3	public
60 Nebraska	S	3-4	3-4	public
61 North Carolina - Chapel Hil	S	3-4	3-4	public
62 Florida	S	3.75	3.75	public
63 Ohio State	Q	4-5	2.7-3.3	public
64 VPI	S	3-4	3-4	public
65 Southern Cal	S	3-4	3-4	
66 Emory				
67 Baylor				
68 Florida State	S	3.4	3.4	public
69 Johns Hopkins	S	3	3	
70 Rice	S	2	2	
71 Miami				
72 LSU			3-4	public
73 Northeastern				
74 Michigan Tech				public
75 Washington Univ. St.Louis	S	3	3	
76 Bowling Green				public
77 Kent State				public
78 New Mexico State				public
79 SUNY-Binghamton				public
80 Wayne State				public

Appendix III

Teaching Loads in Math Departments

81 Dartmouth College	Q	3	2	
82 Howard				
83 Vermont				public
84 Temple				public
85 Memphis				public
86 Iowa State	S	3-4	3-4	public
87 Georgia				public
88 Western Michigan				public
89 Connecticut	S	4 with except	4 with except	public
90 South Carolina	S	3.5	3.5	public
91 Alabama			4	public
92 UC Santa Cruz				public
93 Tufts				
94 New Hampshire				public
95 Clemson				public
96 Oklahoma				public
97 UC Riverside				public
98 Kansas State				public
99 Claremont				
100 Stevens				
101 Indiana University-Purdue				public
102 North Texas				public
103 Cincinnati				public
104 Missouri-Rolla	S	4	4	public
105 Rhode Island				public
106 George Washington				
107 Wisconsin-Milwaukee				public
108 Texas Tech				public
109 SUNY-Albany				public
110 Oregon State				public
111 CUNY				public
112 Montana State				public
113 Tulane				
114 South Florida				public
115 Ohio University				public
116 Lehigh				
117 Southern Illinois Carbondale				public
118 SUNY-Buffalo				public
119 Arkansas				public
120 Colorado State				public
121 Mississippi State				public
122 Colorado-Boulder				public
123 Auburn	S	4	4	public
124 Northern Illinois				public

125 Toledo

public

126 Hawaii

public

127 Mississippi

public

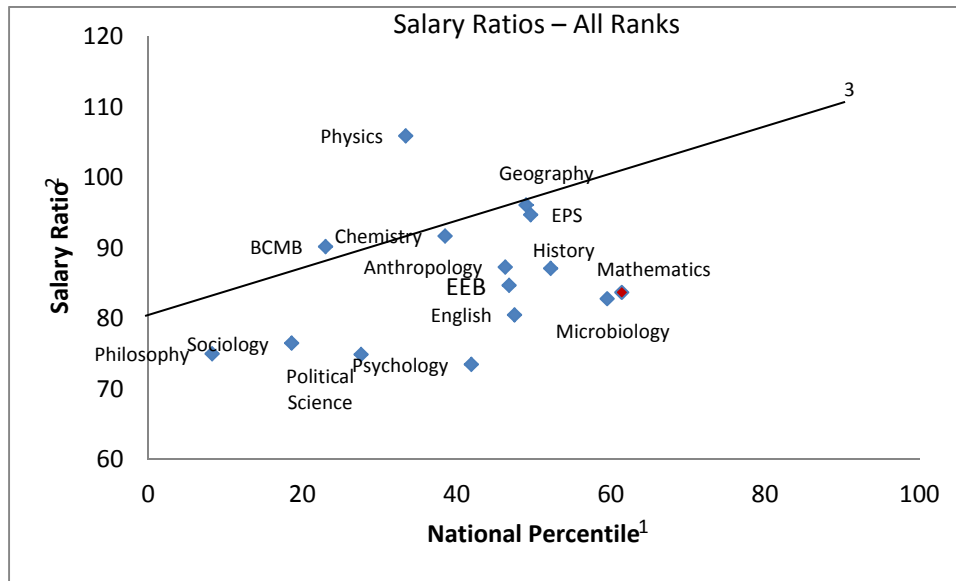
*Note: Some departments reported a range, others reported an average load

College		UTK				UT Average Salary as a Ratio to		
Department		Average	Number	Minimum	Maximum	Research Very High	THEC Peer	Top 25
	Rank							
Arts & Sciences								
	Total							
	Professor	97,906	205	58,770	207,059	0.85	0.86	0.83
	Assoc. Prof.	68,069	120	48,454	102,000	0.90	0.91	0.88
	Asst. Prof.	58,835	114	46,000	78,000	0.92	0.93	0.91
	All Ranks	63,570	439			0.90	0.91	0.88
Arts & Sciences - Humanities								
	Total							
	Professor	82,450	70	58,770	159,313	0.78	0.83	0.77
	Assoc. Prof.	63,397	59	50,751	89,780	0.88	0.91	0.86
	Asst. Prof.	51,941	38	46,000	58,000	0.88	0.91	0.87
	All Ranks	68,777	167			0.84	0.88	0.82
Classics								
	Professor	90,359	2	80,967	99,750	0.87	0.92	0.89
	Assoc. Prof.	62,065	4	56,621	66,300	0.88	0.88	0.85
	Asst. Prof.		0					
	All Ranks	71,496	6			0.87	0.87	0.86
English								
	Professor	84,193	20	61,346	104,000	0.75	0.82	0.74
	Assoc. Prof.	65,256	10	58,977	83,900	0.88	0.92	0.87
	Asst. Prof.	54,771	11	52,000	58,000	0.89	0.91	0.88
	All Ranks	71,680	41			0.81	0.85	0.78
Modern Foreign Languages & Lit								
	Professor	75,818	14	58,770	97,669	0.73	0.76	0.72
	Assoc. Prof.	59,414	9	56,568	62,153	0.83	0.87	0.82
	Asst. Prof.	52,284	7	51,000	53,516	0.91	0.94	0.90
	All Ranks	65,406	30			0.84	0.87	0.81
Philosophy								
	Professor	77,112	4	66,036	82,579	0.67	0.74	0.65
	Assoc. Prof.	77,647	2	65,513	89,780	1.05	1.12	1.04
	Asst. Prof.	50,000	3	50,000	50,000	0.85	0.89	0.83
	All Ranks	68,193	9			0.75	0.84	0.72
Religious Studies								
	Professor	90,440	4	72,807	115,531	0.83	0.79	0.81
	Assoc. Prof.	68,871	2	61,206	76,535	0.96	0.92	0.93
	Asst. Prof.	55,991	1	55,991	55,991	0.94	0.93	0.93
	All Ranks	79,356	7			0.98	0.94	0.94

College		UTK				UT Average Salary as a Ratio to		
Department		Average	Number	Minimum	Maximum	Research Very High	THEC Peer	Top 25
	Rank							
School Of Art								
	Professor	80,224	12	62,885	119,685	0.79	0.87	0.76
	Assoc. Prof.	66,052	8	56,459	86,659	0.93	1.00	0.94
	Asst. Prof.	51,818	5	49,225	55,000	0.90	0.93	0.89
	All Ranks	70,008	25			0.87	0.96	0.85
School Of Music								
	Professor	84,543	11	68,587	159,313	0.91	0.91	0.89
	Assoc. Prof.	60,932	19	50,751	80,720	0.90	0.90	0.85
	Asst. Prof.	47,297	7	46,000	50,782	0.85	0.86	0.81
	All Ranks	65,372	37			0.86	0.86	0.82
Theatre								
	Professor	94,213	3	82,633	116,900	0.99	1.00	0.99
	Assoc. Prof.	65,148	5	59,907	73,202	0.96	0.97	0.95
	Asst. Prof.	52,278	4	49,900	54,000	0.95	0.95	0.93
	All Ranks	68,124	12			0.94	0.98	0.94
Arts & Sciences - Soc Sci								
	Total							
	Professor	91,056	43	62,245	131,883	0.76	0.77	0.74
	Assoc. Prof.	69,821	27	58,875	102,000	0.89	0.92	0.87
	Asst. Prof.	57,885	34	52,830	73,620	0.88	0.90	0.86
	All Ranks	74,699	104			0.80	0.83	0.77
Anthropology								
	Professor	85,344	6	62,245	103,785	0.80	0.79	0.77
	Assoc. Prof.		0					
	Asst. Prof.	57,710	5	56,820	59,395	0.93	0.95	0.93
	All Ranks	72,783	11			0.87	0.90	0.85
Geography								
	Professor	100,595	6	69,955	127,000	0.93	0.96	0.89
	Assoc. Prof.	72,357	2	66,014	78,699	0.94	0.97	0.94
	Asst. Prof.	63,938	4	56,000	73,620	1.00	1.03	0.99
	All Ranks	83,670	12			0.96	1.01	0.93
History								
	Professor	97,342	8	76,820	123,395	0.87	0.88	0.85
	Assoc. Prof.	66,990	6	58,875	73,300	0.90	0.92	0.88
	Asst. Prof.	54,167	6	53,000	55,000	0.90	0.93	0.89
	All Ranks	75,284	20			0.87	0.89	0.84

College		UTK				UT Average Salary as a Ratio to		
Department		Average	Number	Minimum	Maximum	Research Very High	THEC Peer	Top 25
	Rank							
	Political Science							
	Professor	83,069	10	73,611	102,177	0.65	0.63	0.61
	Assoc. Prof.	72,000	1	72,000	72,000	0.85	0.85	0.81
	Asst. Prof.	55,555	5	52,830	59,350	0.80	0.81	0.76
	All Ranks	73,779	16			0.75	0.74	0.70
	Psychology							
	Professor	88,380	10	70,105	131,883	0.71	0.74	0.69
	Assoc. Prof.	72,881	10	62,630	102,000	0.92	0.98	0.90
	Asst. Prof.	59,718	10	56,463	64,000	0.87	0.89	0.85
	All Ranks	73,660	30			0.74	0.78	0.70
	Sociology							
	Professor	102,178	3	81,835	121,204	0.84	0.85	0.83
	Assoc. Prof.	67,213	8	63,570	73,757	0.86	0.91	0.84
	Asst. Prof.	55,958	4	53,830	57,000	0.85	0.87	0.83
	All Ranks	71,204	15			0.77	0.76	0.73
Arts & Sciences - Nat Sci								
	Total							
	Professor	112,868	92	66,247	207,059	0.93	0.94	0.91
	Assoc. Prof.	74,784	34	48,454	101,240	0.90	0.92	0.89
	Asst. Prof.	65,842	42	60,000	78,000	0.93	0.92	0.92
	All Ranks	93,404	168			0.91	0.91	0.89
	Biochem/Cell & Molec Biology							
	Professor	119,622	12	76,928	197,847	0.95	0.95	0.95
	Assoc. Prof.	73,506	8	65,876	80,523	0.88	0.88	0.88
	Asst. Prof.	68,307	8	66,966	70,000	0.98	1.04	0.97
	All Ranks	91,785	28			0.90	0.91	0.89
	Chemistry							
	Professor	115,622	18	74,416	207,059	0.89	0.89	0.87
	Assoc. Prof.	70,760	2	67,206	74,313	0.84	0.91	0.82
	Asst. Prof.	61,659	6	60,000	66,652	0.86	0.90	0.86
	All Ranks	99,718	26			0.92	0.92	0.88
	Earth & Planetary Sciences							
	Professor	126,696	6	72,753	168,533	1.12	1.09	1.11
	Assoc. Prof.	71,304	6	48,454	77,384	0.89	0.86	0.88
	Asst. Prof.	61,528	3	61,000	62,000	0.89	0.83	0.87
	All Ranks	91,506	15			0.95	0.92	0.93

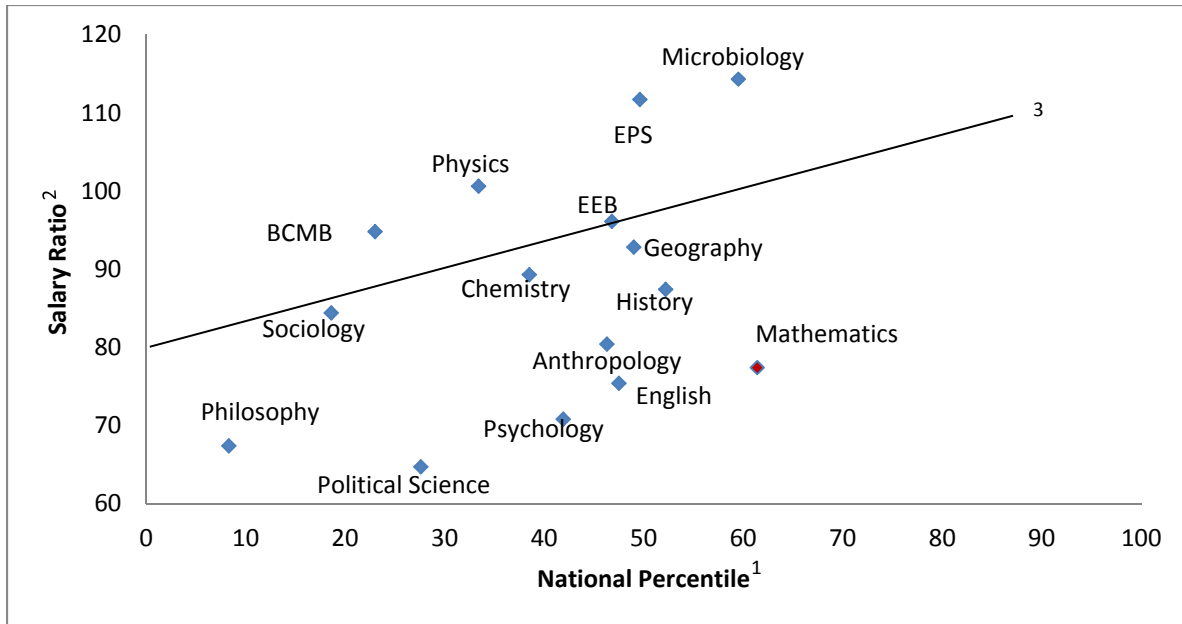
College	Department	Rank	UTK				UT Average Salary as a Ratio to		
			Average	Number	Minimum	Maximum	Research Very High	THEC Peer	Top 25
	Ecology & Evolutionary Biology								
		Professor	120,865	10	66,247	192,460	0.96	0.88	0.96
		Assoc. Prof.	75,133	6	61,046	83,347	0.83	0.79	0.85
		Asst. Prof.	66,019	11	62,000	78,000	0.89	0.82	0.87
		All Ranks	88,357	27			0.85	0.79	0.85
	Mathematics								
		Professor	91,721	23	66,868	123,810	0.77	0.81	0.75
		Assoc. Prof.	74,689	8	64,325	101,240	0.92	0.93	0.91
		Asst. Prof.	65,798	4	65,000	67,000	0.96	0.92	0.96
		All Ranks	84,865	35			0.84	0.85	0.81
	Microbiology								
		Professor	144,839	2	100,596	189,082	1.14	1.24	1.14
		Assoc. Prof.		0					
		Asst. Prof.	66,465	7	62,349	75,005	0.95	1.00	0.98
		All Ranks	83,882	9			0.83	0.95	0.84
	Physics								
		Professor	119,005	21	71,819	199,274	1.01	1.03	0.99
		Assoc. Prof.	84,239	4	78,991	89,791	1.03	1.05	1.01
		Asst. Prof.	69,911	3	69,000	71,732	0.96	0.98	0.94
		All Ranks	108,779	28			1.06	1.08	1.04



1. National Percentiles are based on the midpoints of the S-rank ranges from the 2010 National Research Council assessments (specifically, National percentile = 100 – midpoint of S-rank range). A department at the p-th percentile is ranked above p% of departments in the same field.
2. Salary Ratio = T/N, where T = the average salary of a full professor in the UT department and N = the average salary of all professors in the same field among all universities with Carnegie designation *Research University – Very High*.
3. The “aspirational salary line,” with equation: Salary ratio = 80 + 1/3 National Percentile.
Example: A department at UT ranked better than 60% of departments in its field should have an average professor salary at least as good as the *average* professor salary in the same field at RU-VH institutions.

*Spanish (National Percentile = 64.1) omitted since only salary data for MFLC departments available.

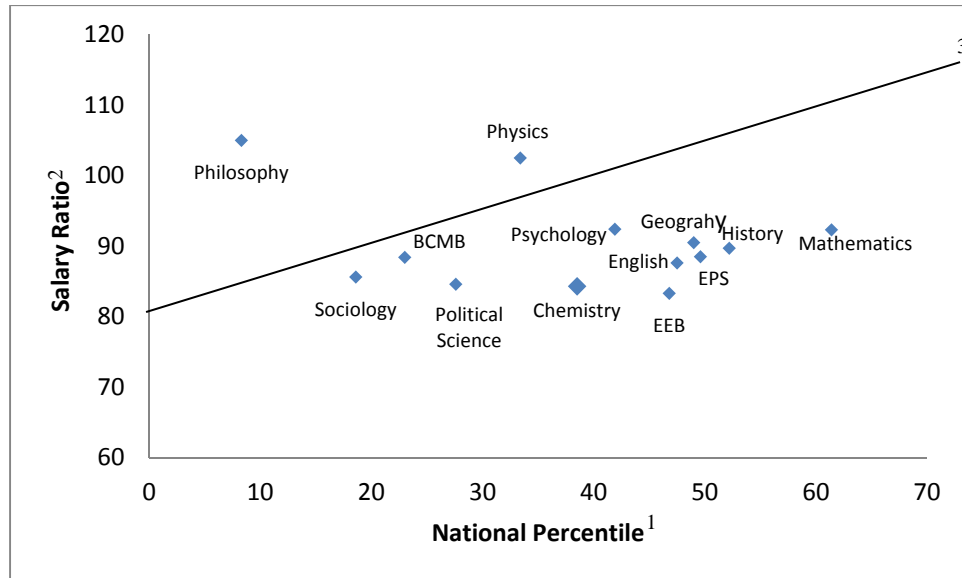
Salary Ratios-Full Professors



1. National Percentiles are based on the midpoints of the S-rank ranges from the 2010 National Research Council assessments (specifically, National percentile = 100 – midpoint of S-rank range). A department at the p-th percentile is ranked above p% of departments in the same field.
2. Salary Ratio = T/N, where T = the average salary of a full professor in the UT department and N = the average salary of a full professor in the same field among all universities with Carnegie designation *Research University – Very High*.
3. The “aspirational salary line,” with equation: Salary ratio = 80 + 1/3 National Percentile.
Example: A department at UT ranked better than 60% of departments in its field should have an average full professor salary at least as good as the *average* full professor salary in the same field at RU-VH institutions.

*Spanish (National Percentile = 64.1) omitted since only salary data for MFL departments available.

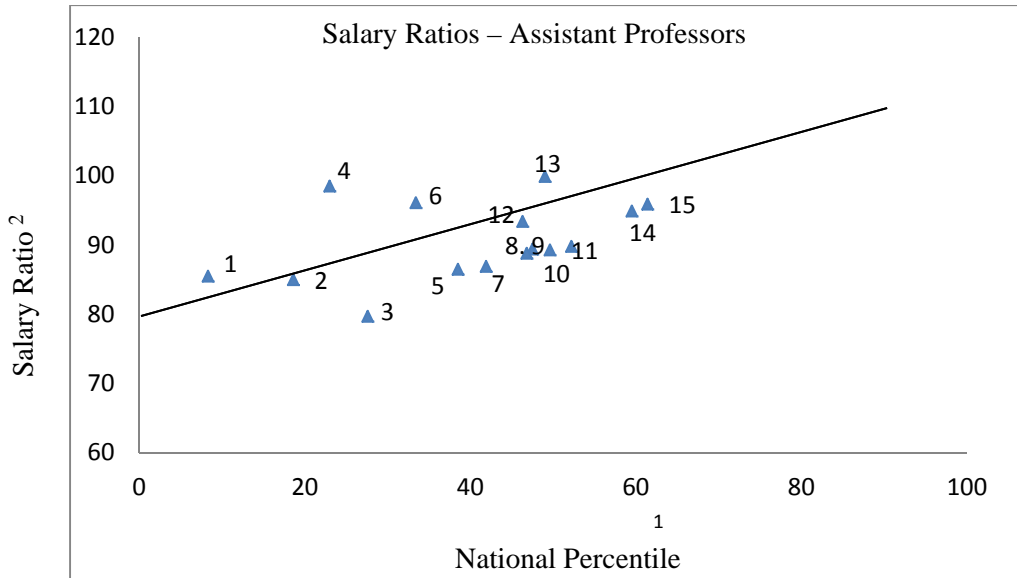
Salary Ratios- Associate Professors



1. National Percentiles are based on the midpoints of the S-rank ranges from the 2010 National Research Council assessments (specifically, National percentile = 100 – midpoint of S-rank range). A department at the p-th percentile is ranked above p% of departments in the same field.
2. Salary Ratio = T/N, where T = the average salary of an associate professor in the UT department and N = the average salary of an associate professor in the same field among all universities with Carnegie designation *Research University – Very High*.
3. The “aspirational salary line,” with equation: Salary ratio = 80 + 1/3 National Percentile.
Example: A department at UT ranked better than 60% of departments in its field should have an average associate professor salary at least as good as the *average* associate professor salary in the same field at RU-VH institutions.

*Spanish (National Percentile = 64.1) omitted since only salary data for MFL departments available.

** Data not available for Anthropology and Microbiology



1 Philosophy	8 EEB	15 Mathematics
2 Sociology	9 EPS	
3 Political Science	10 English	
4 BCMB	11 History	
5 Chemistry	12 Anthropology	
6 Physics	13 Geography	
7 Psychology	14 Microbiology	

- National Percentiles are based on the midpoints of the S-rank ranges from the 2010 National Research Council assessments (specifically, National percentile = 100 – midpoint of S-rank range). A department at the p-th percentile is ranked above p% of departments in the same field.
- Salary Ratio = T/N, where T = the average salary of an assistant professor in the UT department and N = the average salary of an assistant professor in the same field among all universities with Carnegie designation *Research University – Very High*.
- The “aspirational salary line,” with equation: Salary ratio = 80 + 1/3 National Percentile.
Example: A department at UT ranked better than 60% of departments in its field should have an average assistant professor salary at least as good as the *average* assistant professor salary in the same field at RU-VH institutions.

*Spanish (National Percentile = 64.1) omitted since only salary data for MFLL departments available.

Mathematics - 14 Day Count									
Course #	Fall 03	Fall 04	Fall 05	Fall 06	Fall 07	Fall 08	Fall 09	Fall 10	Fall 11
100	60	73	49	47	40	64	69	74	30
109									
110/113	377	755	730	818	861	875	801	862	814
115	498	617	654	721	698	704	704	758	760
117				12	17	14	10	11	10
119	1,574	1,637	1,363	1,255	1,110	1,085	996	1,054	1,098
123	934	973	1,215	1,081	1,119	1,032	861	772	733
125	720	842	1,250	1,437	1,376	1,248	1,090	1,188	1,178
130	463	578	522	521	523	579	557	507	561
141	450	355	512	540	566	646	578	700	646
142	305	276	378	396	378	401	456	428	424
147	14	14	26	13	40	23	23	36	35
148	12	15	20	19	21	26	17	46	32
151	81	93	113	148	183	188	134	142	160
152	46	50	59	91	99	91	102	65	83
Totals	5,534	6,278	6,891	7,099	7,031	6,976	6,398	6,643	6,564
200	77	81	102	105	104	101	107	112	107
201	73	15	13						
202	12	15	9						
205									7
231	226	213	218	260	216	273	323	341	341
241	220	216	214	244	295	303	320	351	376
247	10	19	16	19	24	30	33	41	24
251	125	113	93	100	138	172	159	126	152
299					1		0	0	0
Totals	743	672	665	728	778	879	942	971	1,007
300	87	77	55	62	78	79	69	78	70
307						19	9	19	14
309					7	5	3	7	4
323	25	25	30	32	29	31	35	35	39
341	24	15	24	15	12	19	31	31	24
351	24	25	17	31	23	25	14	27	30
371	27	18	11	15	22	14	14	26	35
Totals	187	160	137	155	171	192	175	223	216
403	27	25	37	40	40	40	58	47	
404					12	10	6	4	11
411	15	10	8	21		21	18	10	
423	17	24	18	25	18	30	32	32	34
431	28	19	8	20	21		18	21	29
435		19	24		19	19	20	27	31
443			18						
445	29	29	22	25	21	16	31	19	19

447	20	14	18	23	20	26	29	24	30
453	12	9				12			
455	9	8	10	15	9		6	19	12
457	8	11	17	11	13	22	22	12	21
460	15	11	14		12	14	15	23	16
471	24	14	12	15	24	30	23	40	9
475					7				
490						13		0	
497					9	6	10	5	7
498					7	2	5	1	5
499						9		8	
Totals	204	193	206	195	232	270	293	292	224
Grand Totals	6,668	7,303	7,899	8,177	8,212	8,317	7,808	8,129	8,011

Mathematics	14 Day	14 Day	14 Day	14 Day	14 Day	14 Day	14 Day	14 day	14 day
Course #	Spring 04	Spring 05	Spring 06	Spring 07	Spring 08	Spring 09	Spring 10	spring 11	spring 12
100	17	21	19	18	9	0	16	12	
109									
110/113	214	404	362	447	505	505	525	494	465
115	544	669	690	707	794	817	778	780	758
119	547	648	512	424	449	549	451	559	521
123	604	796	887	778	798	565	471	488	555
125	1,006	1,241	1,438	1,518	1,474	1,413	1,243	1215	1,143
130	275	343	276	330	267	293	260	288	320
141	289	356	404	361	339	406	411	333	413
142	318	327	417	410	459	528	486	518	497
148	6	10	20	15	15	22	14	35	24
151	60	89	116	138	144	115	96	130	129
152	52	53	73	111	139	109	96	114	119
171	21	17	24	29	30	32	38	26	28
Total 100 Level	3,953	4,974	5,238	5,286	5,422	5,354	4,885	4,992	4,972
200	135	125	108	121	78	116	144	126	135
201	22								
202	37	25	13	11					
231	221	236	234	267	253	300	355	335	334
241	199	141	198	231	250	280	296	336	318
247		16	18	12	12	10	15	24	18
251	78	75	73	114	149	143	137	152	164
257	8	10	13	19	26	10	16	13	16
Total 200 Level	700	628	657	775	768	859	963	986	985
300	88	76	46	41	54	59	60	55	48
307									14
323	30	25	21	26	31	39	36	38	38
341	20	20	20	27	23	25	29	27	33
351	22	26	23	25	24	34	36	25	29
371	17	21	23	13	16	26	31	29	23
399	11	10	12			2		1	
Total 300 Level	100	102	99	91	94	126	132	120	185
400	25	25	34	26	27	29	25	30	28
404						18			
405					4		37	17	25
411					13				
421	11	7	12	15		9	9		
424	17		20		16		18		24
425		22		23		21		20	
431	23	21	17	12		20			
435	28	24	30	22	22	26	33	19	27
443	19								
446	22	30	14	16	13	12	33	17	13
448	15	4	13	17	16	17	20	22	29
453		18	39	11	22	0		22	18
456	9	6	10	4				17	8
458	2	12	12	7	12	19	9	12	20

460				7					
461	6	13			13				
467						18	9	14	10
472	18	7	19			30		20	9
475	11	9				14	41	17	17
490			7			1	2	0	
497			5	5	7	4	10	8	7
Total 400 Level	206	198	232	165	165	238	246	235	235
Grand Totals	4,959	5,902	6,226	6,317	6,449	6,577	6,226	6,388	6,377